

## **Vanalman Ave between Ridgebank Cres and Mann Ave**

**March 11, 2019 To March 15, 2019**



The data presented here is for information purposes only and should not be considered authoritative for construction, geotechnical, engineering, navigational, legal, or other site-specific uses. The information shared is owned by the Transportation Division of the Engineering Department at the District of Saanich. Accuracy is not guaranteed.

Start Date: 11-Mar-19  
 Start Time: 0:12  
 Station ID: C0073-01

**Location 1: Vanalman Ave between Ridgebank Cres and Mann Ave**

Note: Ridgebank Cres and Mann Ave

DATE:	March 11, 2019		March 12, 2019		March 13, 2019		March 14, 2019		March 15, 2019		WK AVG		WK AVG	HOURLY
	MON		TUE		WED		THURS		FRI		NB		CH 1+2	%
Time:	NB	SB	NB	SB	NB	SB	NB	SB	NB	SB	NB	SB		
12-1 AM			0	1	2	2	2	4			1	2	4	0.3%
1-2 AM			1	3	0	2	0	0			0	2	2	0.2%
2-3 AM			1	1	2	3	1	1			1	2	3	0.2%
3-4 AM			1	0	1	1	1	1			1	1	2	0.1%
4-5 AM			3	0	6	2	3	0			4	1	5	0.4%
5-6 AM			9	8	15	5	13	5			12	6	18	1.4%
6-7 AM			29	11	33	11	29	13			30	12	42	3.2%
7-8 AM			53	25	49	32	44	24			49	27	76	5.7%
8-9 AM			61	50	52	45	55	51			56	49	105	7.9%
9-10 AM			36	40	34	40	34	37			35	39	74	5.6%
10-11 AM			40	31	40	32	41	41			40	35	75	5.7%
11-12 PM			44	44	32	43	41	46			39	44	83	6.3%
12-1 PM			42	35	52	41	40	42			45	39	84	6.4%
1-2 PM			38	51	36	41	40	32			38	41	79	6.0%
2-3 PM			48	40	49	53	51	44			49	46	95	7.2%
3-4 PM			49	50	59	48	56	54			55	51	105	8.0%
4-5 PM			68	64	63	58	79	66			70	63	133	10.0%
5-6 PM			67	42	70	32	51	48			63	41	103	7.8%
6-7 PM			42	27	51	41	44	30			46	33	78	5.9%
7-8 PM			27	24	38	23	32	29			32	25	58	4.4%
8-9 PM			25	13	24	16	21	16			23	15	38	2.9%
9-10 PM			18	11	21	9	18	12			19	11	30	2.2%
10-11 PM			13	6	15	7	10	6			13	6	19	1.4%
11-12 AM			8	3	6	7	4	6			6	5	11	0.9%
<b>LANES</b>			<b>723</b>	<b>580</b>	<b>750</b>	<b>594</b>	<b>710</b>	<b>608</b>			<b>728</b>	<b>594</b>	<b>1322</b>	<b>100.0%</b>
<b>TOTAL</b>			<b>1303</b>		<b>1344</b>		<b>1318</b>				<b>1330</b>			
	MON		TUE		WED		THURS		FRI		WK AVG			

PEAK HOUR					TOTAL VEHICALS-PEAK PERIODS		2 HOUR PEAK INTERVALS				
MAX. 7 - 9 am PEAK HOUR	105	⇒	7.9%	between 8-9 AM	584	⇒	6 HR TOTAL	<b>2 HR AM (7 - 9 AM)</b>			
MAX. 7 - 11 am PEAK HOUR	105	⇒	7.9%	between 8-9 AM	416	⇒	4 HR TOTAL	VEH / HR	VEH / 2HR	2 HR %	
MAX. 11 am - 1 pm PEAK HOUR	84	⇒	6.4%	between 12-1 PM				7-8 AM	76	180	13.6%
MAX. 11 am - 3 pm PEAK HOUR	95	⇒	7.2%	between 2-3 PM				8-9 AM	105		
MAX. 4 - 6 pm PEAK HOUR	133	⇒	10.0%	between 4-5 PM				<b>2 HR NOON (11 - 1 PM)</b>			
MAX. 3 - 6 pm PEAK HOUR	133	⇒	10.0%	between 4-5 PM				VEH / HR	VEH / 2HR	2 HR %	
								11-12 PM	83	167	12.7%
								12-1 PM	84		
								<b>2 HR PM (4 - 6 PM)</b>			
								VEH / HR	VEH / 2HR	2 HR %	
								4-5 PM	133	236	17.9%
								5-6 PM	103		

# Vanalman Ave between Ridgebank Cres and Mann Ave

Northbound

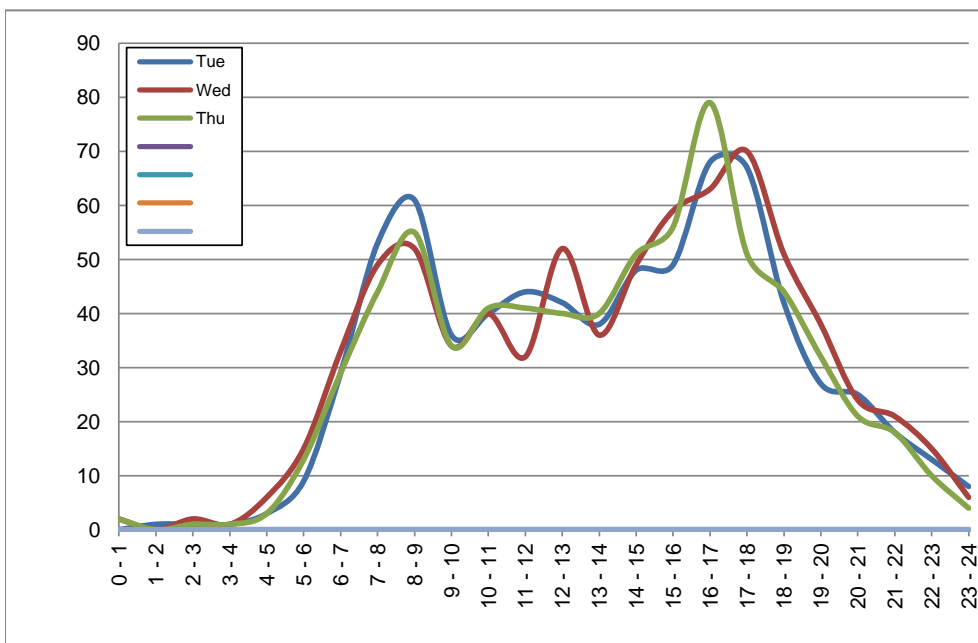
March 12, 2019 to March 14, 2019

## Hourly Volumes

Time Period	Tue	Wed	Thu				
	Mar 12	Mar 13	Mar 14				
0 - 1	0	2	2				
1 - 2	1	0	0				
2 - 3	1	2	1				
3 - 4	1	1	1				
4 - 5	3	6	3				
5 - 6	9	15	13				
6 - 7	29	33	29				
7 - 8	53	49	44				
8 - 9	61	52	55				
9 - 10	36	34	34				
10 - 11	40	40	41				
11 - 12	44	32	41				
12 - 13	42	52	40				
13 - 14	38	36	40				
14 - 15	48	49	51				
15 - 16	49	59	56				
16 - 17	68	63	79				
17 - 18	67	70	51				
18 - 19	42	51	44				
19 - 20	27	38	32				
20 - 21	25	24	21				
21 - 22	18	21	18				
22 - 23	13	15	10				
23 - 24	8	6	4				
<b>Day Total</b>	<b>723</b>	<b>750</b>	<b>710</b>				

## 15-Minute Volumes

Time Start	Tue	Wed	Thu				
	Mar 12	Mar 13	Mar 14				
0:00	0	1	0				
0:15	0	0	1				
0:30	0	0	1				
0:45	0	1	0				
1:00	0	0	0				
1:15	1	0	0				
1:30	0	0	0				
1:45	0	0	0				
2:00	1	1	0				
2:15	0	0	1				
2:30	0	0	0				
2:45	0	1	0				
3:00	0	0	0				
3:15	0	1	0				
3:30	0	0	0				
3:45	1	0	1				
4:00	1	0	0				
4:15	0	1	2				
4:30	2	3	1				
4:45	0	2	0				
5:00	0	0	0				
5:15	1	1	0				
5:30	1	4	6				
5:45	7	10	7				
6:00	7	7	6				
6:15	7	9	10				
6:30	5	8	4				
6:45	10	9	9				
7:00	12	11	11				
7:15	12	14	10				
7:30	15	10	12				
7:45	14	14	11				
8:00	14	14	21				
8:15	19	19	15				
8:30	13	7	7				
8:45	15	12	12				
9:00	12	13	14				
9:15	10	9	7				
9:30	8	6	8				
9:45	6	6	5				
10:00	10	7	10				
10:15	11	12	8				
10:30	11	7	12				
10:45	8	14	11				
11:00	12	10	10				
11:15	6	5	9				
11:30	11	9	13				
11:45	15	8	9				
12:00	8	9	10				
12:15	10	18	6				
12:30	12	14	11				
12:45	12	11	13				
13:00	11	10	10				
13:15	7	11	14				
13:30	11	6	6				
13:45	9	9	10				
14:00	14	11	8				
14:15	10	17	13				
14:30	11	13	19				
14:45	13	8	11				
15:00	14	14	14				
15:15	8	20	16				
15:30	17	15	14				
15:45	10	10	12				
16:00	13	10	20				
16:15	19	17	16				
16:30	18	16	21				
16:45	18	20	22				
17:00	16	16	10				
17:15	20	19	16				
17:30	12	16	17				
17:45	19	19	8				
18:00	10	9	13				
18:15	11	8	14				
18:30	7	20	10				
18:45	14	14	7				
19:00	13	9	11				
19:15	2	13	9				
19:30	4	6	8				
19:45	8	10	4				
20:00	6	6	6				
20:15	7	7	7				
20:30	3	4	4				
20:45	9	7	4				
21:00	5	9	2				
21:15	4	5	4				
21:30	6	2	7				
21:45	3	5	5				
22:00	4	6	0				
22:15	4	3	5				
22:30	4	3	3				
22:45	1	3	2				
23:00	2	2	1				
23:15	3	0	0				
23:30	1	3	1				
23:45	2	1	2				



Site notes:

# Vanalman Ave between Ridgebank Cres and Mann Ave

Southbound

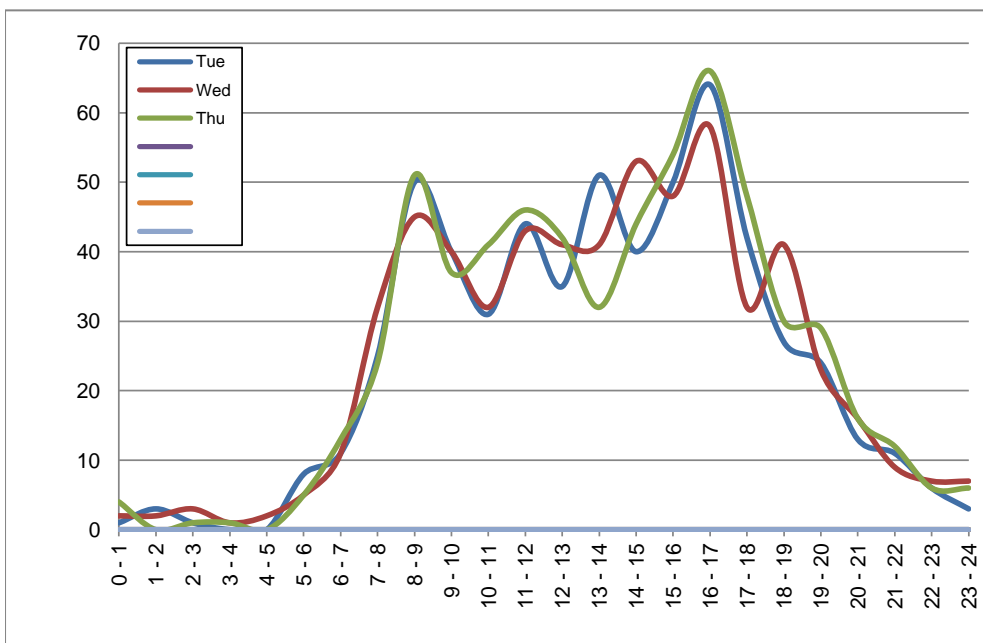
March 12, 2019 to March 14, 2019

## Hourly Volumes

Time Period	Tue	Wed	Thu				
	Mar 12	Mar 13	Mar 14				
0 - 1	1	2	4				
1 - 2	3	2	0				
2 - 3	1	3	1				
3 - 4	0	1	1				
4 - 5	0	2	0				
5 - 6	8	5	5				
6 - 7	11	11	13				
7 - 8	25	32	24				
8 - 9	50	45	51				
9 - 10	40	40	37				
10 - 11	31	32	41				
11 - 12	44	43	46				
12 - 13	35	41	42				
13 - 14	51	41	32				
14 - 15	40	53	44				
15 - 16	50	48	54				
16 - 17	64	58	66				
17 - 18	42	32	48				
18 - 19	27	41	30				
19 - 20	24	23	29				
20 - 21	13	16	16				
21 - 22	11	9	12				
22 - 23	6	7	6				
23 - 24	3	7	6				
<b>Day Total</b>	<b>580</b>	<b>594</b>	<b>608</b>				

## 15-Minute Volumes

Time Start	Tue	Wed	Thu				
	Mar 12	Mar 13	Mar 14				
0:00	1	2	2				
0:15	0	0	0				
0:30	0	0	0				
0:45	0	0	2				
1:00	2	2	0				
1:15	0	0	0				
1:30	0	0	0				
1:45	1	0	0				
2:00	0	2	1				
2:15	1	0	0				
2:30	0	1	0				
2:45	0	0	0				
3:00	0	1	0				
3:15	0	0	0				
3:30	0	0	1				
3:45	0	0	0				
4:00	0	0	0				
4:15	0	0	0				
4:30	0	1	0				
4:45	0	1	0				
5:00	0	0	0				
5:15	0	2	1				
5:30	3	1	3				
5:45	5	2	1				
6:00	3	3	5				
6:15	2	2	2				
6:30	2	2	2				
6:45	4	4	4				
7:00	4	5	4				
7:15	9	9	6				
7:30	6	10	8				
7:45	6	8	6				
8:00	9	8	14				
8:15	10	11	12				
8:30	10	15	15				
8:45	21	11	10				
9:00	8	10	14				
9:15	11	16	11				
9:30	7	6	7				
9:45	14	8	5				
10:00	10	10	10				
10:15	2	6	8				
10:30	13	7	8				
10:45	6	9	15				
11:00	16	12	14				
11:15	10	11	15				
11:30	6	13	8				
11:45	12	7	9				
12:00	8	10	7				
12:15	9	11	9				
12:30	13	11	11				
12:45	5	9	15				
13:00	15	5	7				
13:15	12	14	6				
13:30	13	8	10				
13:45	11	14	9				
14:00	5	14	11				
14:15	10	13	13				
14:30	14	15	13				
14:45	11	11	7				
15:00	10	10	11				
15:15	15	13	16				
15:30	14	9	16				
15:45	11	16	11				
16:00	21	16	20				
16:15	11	8	20				
16:30	19	17	12				
16:45	13	17	14				
17:00	9	7	18				
17:15	13	8	13				
17:30	11	11	7				
17:45	9	6	10				
18:00	7	9	9				
18:15	10	12	5				
18:30	7	6	8				
18:45	3	14	8				
19:00	8	5	12				
19:15	8	2	5				
19:30	4	9	7				
19:45	4	7	5				
20:00	1	4	1				
20:15	6	3	5				
20:30	3	4	5				
20:45	3	5	5				
21:00	3	4	2				
21:15	3	3	5				
21:30	2	1	2				
21:45	3	1	3				
22:00	2	1	1				
22:15	3	2	2				
22:30	0	2	2				
22:45	1	2	1				
23:00	3	4	2				
23:15	0	1	1				
23:30	0	2	1				
23:45	0	0	2				



Site notes:

# Vehicle Speed Summary

Saanich Engineering Department

Count Id: C0073-01

Filename: Vanalman Ave between Ridgebank Cres and Mann Ave-Mar-2019.xlsm

**Location:** Vanalman Ave between Ridgebank Cres and Mann Ave

Note: Ridgebank Cres and Mann Ave

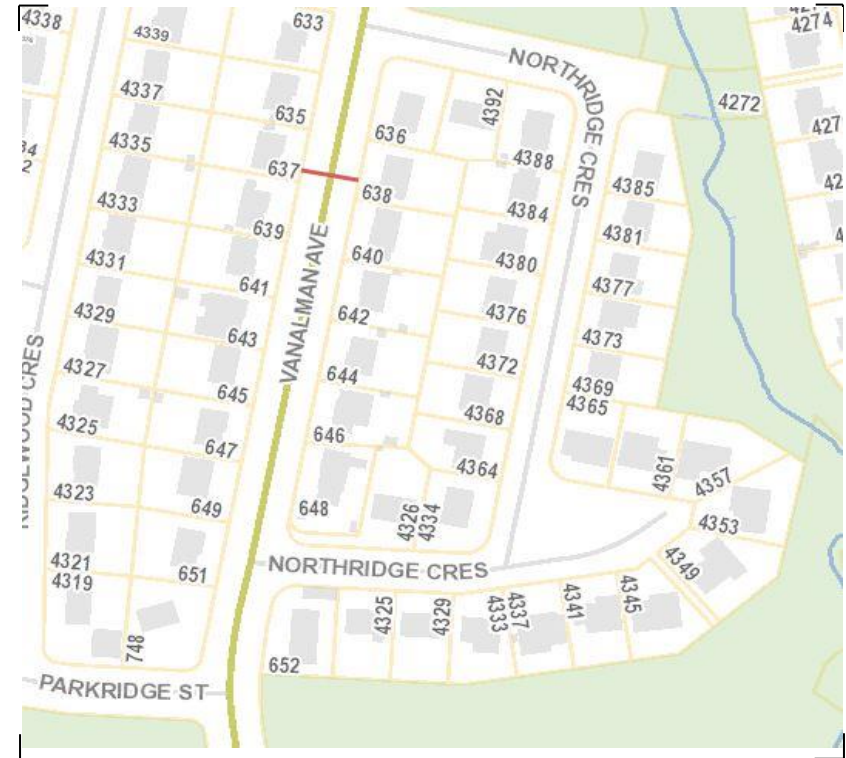
Direction: **North-South**

Dates: **March 11, 2019 To March 15, 2019**

*Filtered data*

AVG. SPEED	<b>24</b> mph	<b>39</b> km/h
50 % SPEED	<b>25</b> mph	<b>40</b> km/h
85 % SPEED	<b>29</b> mph	<b>47</b> km/h
95 % SPEED	<b>32</b> mph	<b>51</b> km/h

Location Map



**Vanalman Ave between Ridgebank Cres and Mann Ave**

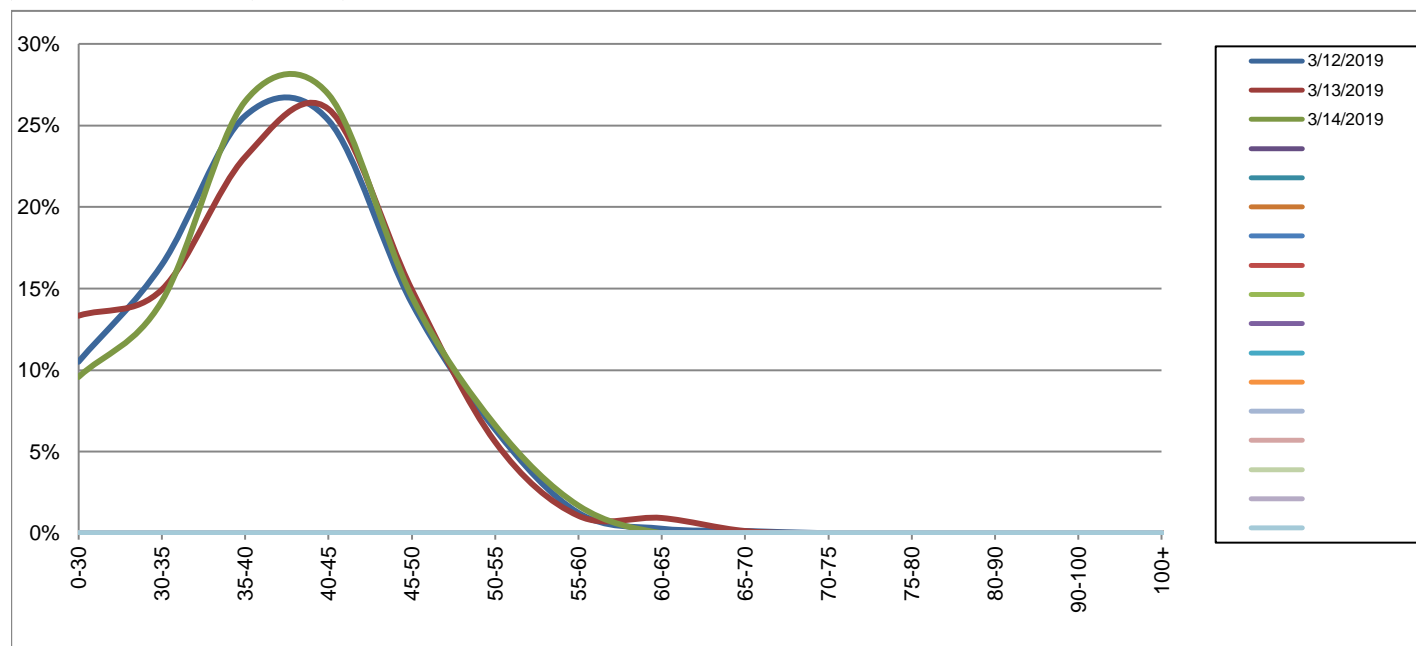
Northbound

March 12, 2019 to March 14, 2019

Daily Speed Bin Percentages															Daily Speed Bin Volumes														Total	Avg.
Bin #	1	2	3	4	5	6	7	8	9	10	11	12	13	14	1	2	3	4	5	6	7	8	9	10	11	12	13	14	Volume	Speed
Bin Speeds	0-30	30-35	35-40	40-45	45-50	50-55	55-60	60-65	65-70	70-75	75-80	80-90	90-100	100+	0-30	30-35	35-40	40-45	45-50	50-55	55-60	60-65	65-70	70-75	75-80	80-90	90-100	100+		
3/12/2019	10.5%	16.5%	25.6%	25.3%	14.1%	6.4%	1.2%	0.3%	0.1%	0.0%	0.0%	0.0%	0.0%	0.0%	76	119	185	183	102	46	9	2	1	0	0	0	0	0	723	38
3/13/2019	13.3%	14.9%	23.1%	26.0%	14.9%	5.6%	1.1%	0.9%	0.1%	0.0%	0.0%	0.0%	0.0%	0.0%	100	112	173	195	112	42	8	7	1	0	0	0	0	0	750	38
3/14/2019	9.6%	14.2%	26.5%	26.9%	14.5%	6.6%	1.7%	0.0%	0.0%	0.0%	0.0%	0.0%	0.0%	0.0%	68	101	188	191	103	47	12	0	0	0	0	0	0	0	710	39
<b>Total</b>	<b>11.2%</b>	<b>15.2%</b>	<b>25.0%</b>	<b>26.1%</b>	<b>14.5%</b>	<b>6.2%</b>	<b>1.3%</b>	<b>0.4%</b>	<b>0.1%</b>	<b>0.0%</b>	<b>0.0%</b>	<b>0.0%</b>	<b>0.0%</b>	<b>0.0%</b>	<b>244</b>	<b>332</b>	<b>546</b>	<b>569</b>	<b>317</b>	<b>135</b>	<b>29</b>	<b>9</b>	<b>2</b>	<b>0</b>	<b>0</b>	<b>0</b>	<b>0</b>	<b>2183</b>	<b>38</b>	

**Speed Data Summary**

Bin #	1	2	3	4	5	6	7	8	9	10	11	12	13	14	Total
Bin Speeds	0-30	30-35	35-40	40-45	45-50	50-55	55-60	60-65	65-70	70-75	75-80	80-90	90-100	100+	
Survey Total	244	332	546	569	317	135	29	9	2	0	0	0	0	0	2183
% Total	11.2%	15.2%	25.0%	26.1%	14.5%	6.2%	1.3%	0.4%	0.1%	0.0%	0.0%	0.0%	0.0%	0.0%	100%
Accumulated %	11.2%	26.4%	51.4%	77.5%	92.0%	98.2%	99.5%	99.9%	100.0%	100.0%	100.0%	100.0%	100.0%	100.0%	
Inverse Accum. %	88.8%	73.6%	48.6%	22.5%	8.0%	1.8%	0.5%	0.1%	0.0%	0.0%	0.0%	0.0%	0.0%	0.0%	
Average Speed	38 KM/H														



Site notes:

**Vanalman Ave between Ridgebank Cres and Mann Ave**

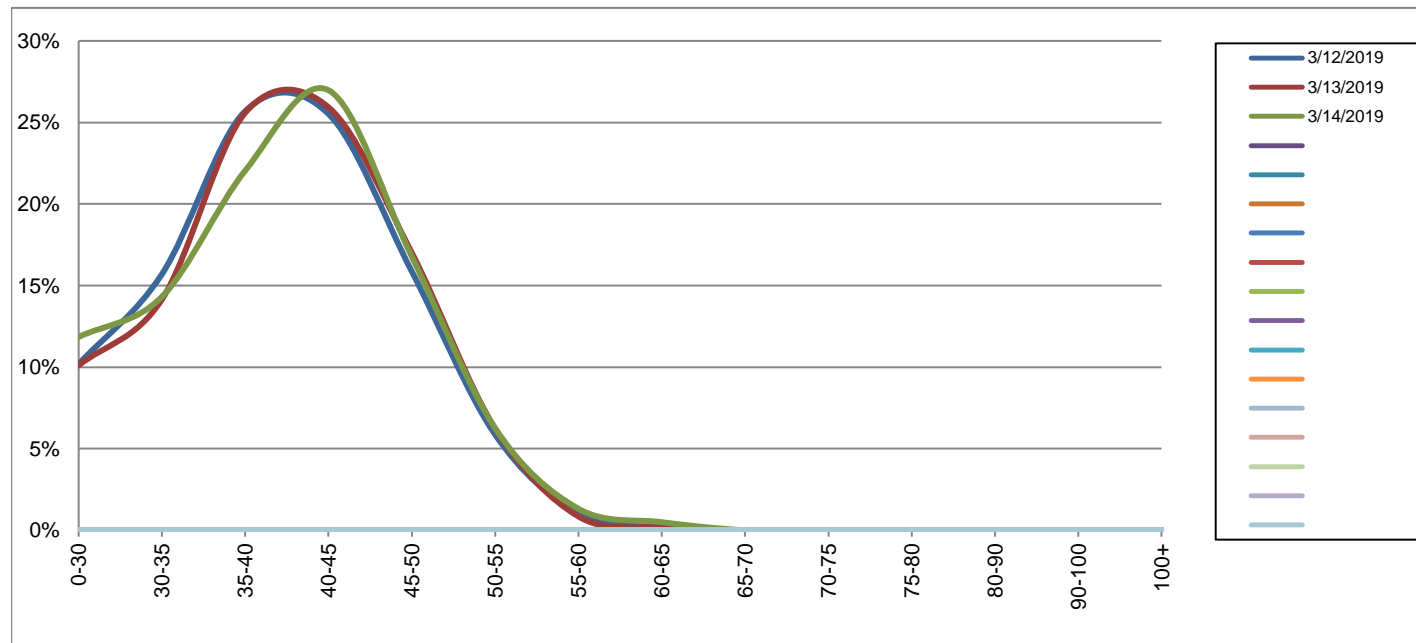
Southbound

March 12, 2019 to March 14, 2019

Daily Speed Bin Percentages															Daily Speed Bin Volumes														Total	Avg.
Bin #	1	2	3	4	5	6	7	8	9	10	11	12	13	14	1	2	3	4	5	6	7	8	9	10	11	12	13	14	Volume	Speed
Bin Speeds	0-30	30-35	35-40	40-45	45-50	50-55	55-60	60-65	65-70	70-75	75-80	80-90	90-100	100+	0-30	30-35	35-40	40-45	45-50	50-55	55-60	60-65	65-70	70-75	75-80	80-90	90-100	100+		
3/12/2019	10.2%	15.7%	25.7%	25.5%	15.9%	5.9%	1.0%	0.2%	0.0%	0.0%	0.0%	0.0%	0.0%	0.0%	59	91	149	148	92	34	6	1	0	0	0	0	0	0	580	38
3/13/2019	10.1%	14.1%	25.6%	25.9%	17.0%	6.2%	0.8%	0.2%	0.0%	0.0%	0.0%	0.0%	0.0%	0.0%	60	84	152	154	101	37	5	1	0	0	0	0	0	0	594	39
3/14/2019	11.8%	14.3%	22.0%	27.0%	16.8%	6.3%	1.3%	0.5%	0.0%	0.0%	0.0%	0.0%	0.0%	0.0%	72	87	134	164	102	38	8	3	0	0	0	0	0	0	608	38
<b>Total</b>	10.7%	14.7%	24.4%	26.2%	16.6%	6.1%	1.1%	0.3%	0.0%	0.0%	0.0%	0.0%	0.0%	0.0%	191	262	435	466	295	109	19	5	0	0	0	0	0	0	1782	39

**Speed Data Summary**

Bin #	1	2	3	4	5	6	7	8	9	10	11	12	13	14	Total
Bin Speeds	0-30	30-35	35-40	40-45	45-50	50-55	55-60	60-65	65-70	70-75	75-80	80-90	90-100	100+	
Survey Total	191	262	435	466	295	109	19	5	0	0	0	0	0	0	1782
% Total	10.7%	14.7%	24.4%	26.2%	16.6%	6.1%	1.1%	0.3%	0.0%	0.0%	0.0%	0.0%	0.0%	0.0%	100%
Accumulated %	10.7%	25.4%	49.8%	76.0%	92.5%	98.7%	99.7%	100.0%	100.0%	100.0%	100.0%	100.0%	100.0%	100.0%	
Inverse Accum. %	89.3%	74.6%	50.2%	24.0%	7.5%	1.3%	0.3%	0.0%	0.0%	0.0%	0.0%	0.0%	0.0%	0.0%	
Average Speed	39 KM/H														



Site notes:



**Vanalman Ave between Ridgebank Cres and Mann Ave**

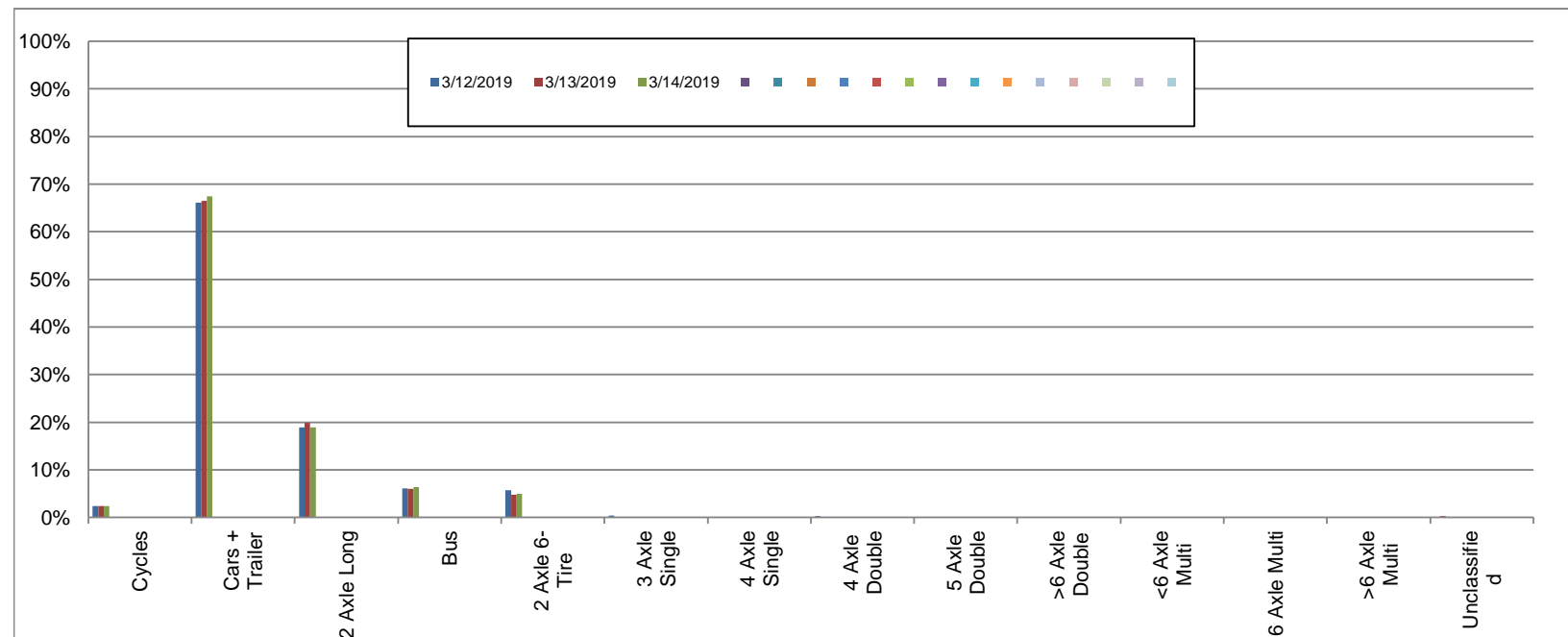
Northbound

March 12, 2019 to March 14, 2019

Daily Class Bin Percentages															Daily Class Bin Volumes															
Bin #	1	2	3	4	5	6	7	8	9	10	11	12	13	14	1	2	3	4	5	6	7	8	9	10	11	12	13	14	Total Volume	
Bin Class	Cycles	Cars + Trailer	2 Axle Long	Bus	2 Axle 6-Tire	3 Axle Single	4 Axle Single	4 Axle Double	5 Axle Double	>6 Axle Double	<6 Axle Multi	6 Axle Multi	>6 Axle Multi	Unclassified	Cycles	Cars + Trailer	2 Axle Long	Bus	2 Axle 6-Tire	3 Axle Single	4 Axle Single	4 Axle Double	5 Axle Double	>6 Axle Double	<6 Axle Multi	6 Axle Multi	>6 Axle Multi	Unclassified	Total Volume	
3/12/2019	2.4%	66.1%	18.9%	6.1%	5.7%	0.4%	0.0%	0.3%	0.0%	0.0%	0.0%	0.0%	0.0%	0.1%	17	478	137	44	41	3	0	2	0	0	0	0	0	0	1	723
3/13/2019	2.4%	66.5%	19.9%	6.0%	4.8%	0.1%	0.0%	0.0%	0.0%	0.0%	0.0%	0.0%	0.0%	0.3%	18	499	149	45	36	1	0	0	0	0	0	0	0	0	2	750
3/14/2019	2.4%	67.5%	18.9%	6.3%	4.9%	0.0%	0.0%	0.0%	0.0%	0.0%	0.0%	0.0%	0.0%	0.0%	17	479	134	45	35	0	0	0	0	0	0	0	0	0	0	710
<b>Total</b>	2.4%	66.7%	19.2%	6.1%	5.1%	0.2%	0.0%	0.1%	0.0%	0.0%	0.0%	0.0%	0.0%	0.1%	52	1456	420	134	112	4	0	2	0	0	0	0	0	3	2183	

**Class Data Summary**

Bin #	1	2	3	4	5	6	7	8	9	10	11	12	13	14	Total Volume
Bin Class	Cycles	Cars + Trailer	2 Axle Long	Bus	2 Axle 6-Tire	3 Axle Single	4 Axle Single	4 Axle Double	5 Axle Double	>6 Axle Double	<6 Axle Multi	6 Axle Multi	>6 Axle Multi	Unclassified	Total Volume
<b>Survey Total</b>	52	1456	420	134	112	4	0	2	0	0	0	0	0	3	2183
<b>% Total</b>	2.4%	66.7%	19.2%	6.1%	5.1%	0.2%	0.0%	0.1%	0.0%	0.0%	0.0%	0.0%	0.0%	0.1%	100%
<b>Accumulated %</b>	2.4%	69.1%	88.3%	94.5%	99.6%	99.8%	99.8%	99.9%	99.9%	99.9%	99.9%	99.9%	99.9%	100.0%	
<b>Inv. Accum. %</b>	97.6%	30.9%	11.7%	5.5%	0.4%	0.2%	0.2%	0.1%	0.1%	0.1%	0.1%	0.1%	0.1%	0.0%	



**Classification Descriptions**

Bin #	Bin Description
1	Motorcycles
2	Passenger cars, including those with recreational trailers
3	2-axle pick-ups, vans, and RVs, including those with recreational trailers
4	Buses
5	2-axle, 6-tire single units
6	3-axle single units
7	4-axle single units
8	3-axle or 4-axle double unit
9	5-axle double unit
10	6-, 7-, or 8-axle double unit
11	5-axle multiple unit
12	6-axle multiple unit
13	7-or-more-axle multiple unit
14	Vehicles that could not be classified

Site notes:



**Vanalman Ave between Ridgebank Cres and Mann Ave**

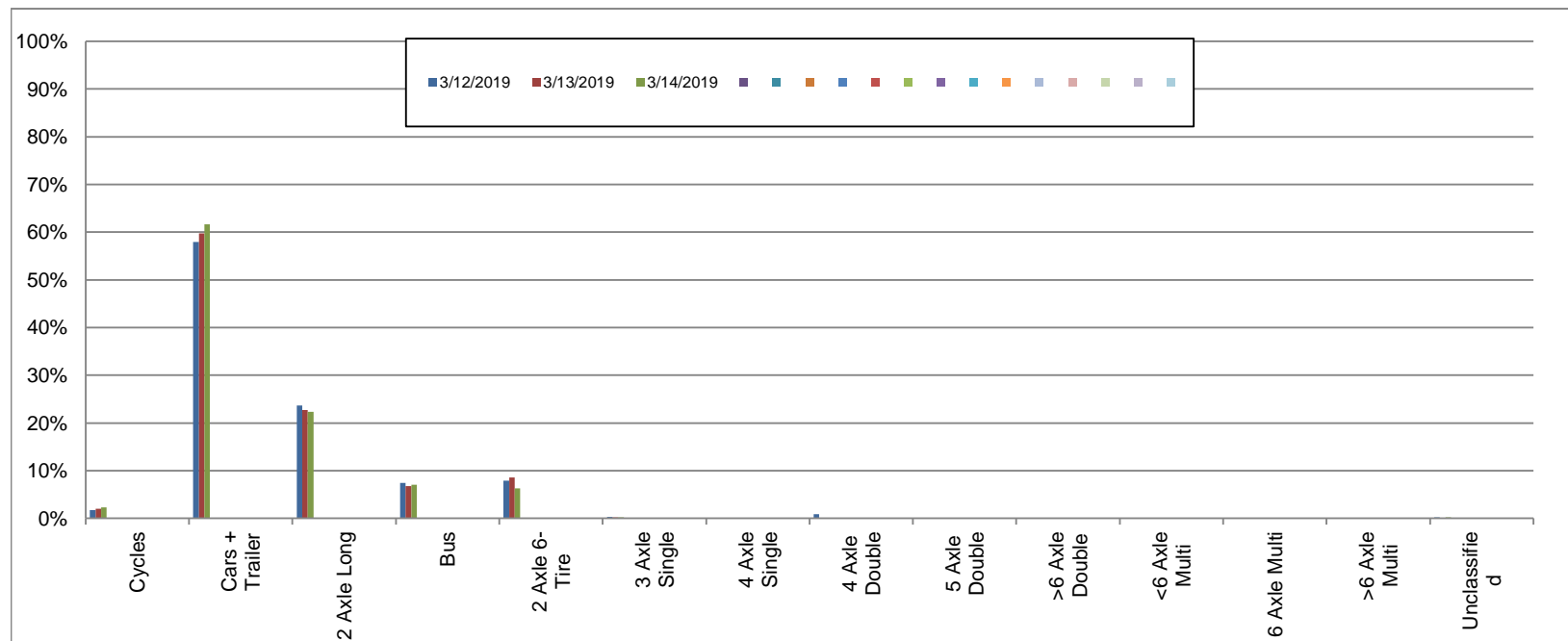
Southbound

March 12, 2019 to March 14, 2019

Daily Class Bin Percentages															Daily Class Bin Volumes															
Bin #	1	2	3	4	5	6	7	8	9	10	11	12	13	14	1	2	3	4	5	6	7	8	9	10	11	12	13	14	Total Volume	
Bin Class	Cycles	Cars + Trailer	2 Axle Long	Bus	2 Axle 6-Tire	3 Axle Single	4 Axle Single	4 Axle Double	5 Axle Double	>6 Axle Double	<6 Axle Multi	6 Axle Multi	>6 Axle Multi	Unclassified	Cycles	Cars + Trailer	2 Axle Long	Bus	2 Axle 6-Tire	3 Axle Single	4 Axle Single	4 Axle Double	5 Axle Double	>6 Axle Double	<6 Axle Multi	6 Axle Multi	>6 Axle Multi	Unclassified		
3/12/2019	1.7%	57.9%	23.6%	7.4%	7.9%	0.3%	0.0%	0.9%	0.0%	0.0%	0.0%	0.0%	0.0%	0.2%	10	336	137	43	46	2	0	5	0	0	0	0	0	0	1	580
3/13/2019	2.0%	59.8%	22.7%	6.7%	8.6%	0.2%	0.0%	0.0%	0.0%	0.0%	0.0%	0.0%	0.0%	0.0%	12	355	135	40	51	1	0	0	0	0	0	0	0	0	0	594
3/14/2019	2.3%	61.7%	22.4%	7.1%	6.3%	0.2%	0.0%	0.0%	0.0%	0.0%	0.0%	0.0%	0.0%	0.2%	14	375	136	43	38	1	0	0	0	0	0	0	0	0	1	608
<b>Total</b>	2.0%	59.8%	22.9%	7.1%	7.6%	0.2%	0.0%	0.3%	0.0%	0.0%	0.0%	0.0%	0.0%	0.1%	36	1066	408	126	135	4	0	5	0	0	0	0	0	2	1782	

**Class Data Summary**

Bin #	1	2	3	4	5	6	7	8	9	10	11	12	13	14	Total Volume
Bin Class	Cycles	Cars + Trailer	2 Axle Long	Bus	2 Axle 6-Tire	3 Axle Single	4 Axle Single	4 Axle Double	5 Axle Double	>6 Axle Double	<6 Axle Multi	6 Axle Multi	>6 Axle Multi	Unclassified	Total Volume
<b>Survey Total</b>	36	1066	408	126	135	4	0	5	0	0	0	0	0	2	1782
<b>% Total</b>	2.0%	59.8%	22.9%	7.1%	7.6%	0.2%	0.0%	0.3%	0.0%	0.0%	0.0%	0.0%	0.0%	0.1%	100%
<b>Accumulated %</b>	2.0%	61.8%	84.7%	91.8%	99.4%	99.6%	99.6%	99.9%	99.9%	99.9%	99.9%	99.9%	99.9%	100.0%	
<b>Inv. Accum. %</b>	98.0%	38.2%	15.3%	8.2%	0.6%	0.4%	0.4%	0.1%	0.1%	0.1%	0.1%	0.1%	0.1%	0.0%	



**Classification Descriptions**

Bin #	Bin Description
1	Motorcycles
2	Passenger cars, including those with recreational trailers
3	2-axle pick-ups, vans, and RVs, including those with recreational trailers
4	Buses
5	2-axle, 6-tire single units
6	3-axle single units
7	4-axle single units
8	3-axle or 4-axle double unit
9	5-axle double unit
10	6-, 7-, or 8-axle double unit
11	5-axle multiple unit
12	6-axle multiple unit
13	7-or-more-axle multiple unit
14	Vehicles that could not be classified

Site notes: